



Details & Content Created By

Tucker Webb
Founder
Lead Designer

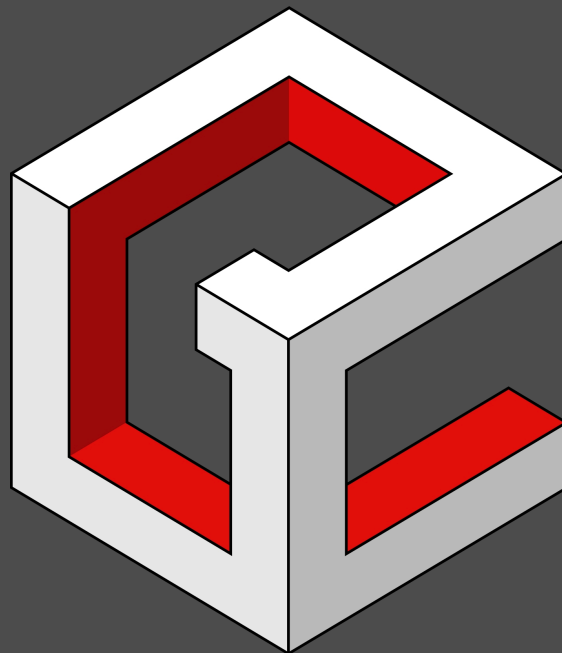


Phone:
(604) 208 6164

Email:
Tucker@Beyond-Code.net

Expertise

For inquiries unrelated to design style specifics, kindly reach out to Jamie.



BEYOND CODE

Construction Detail Design
© Beyond-Code.net

Jamie Van Gelderen
Founder
Head Of Sales



Phone:
(780) 203 0127

Email:
Jamie@Beyond-Code.net

Expertise

- Detail design constructability
- Builder/material/product sourcing & specifications
- Sales inquiries

Beyond Code Detail Services Brochure

[CLICK HERE](#)

General Notes

Disclaimers

Beyond Code Construction Education Inc. construction detail services and content, exclusively designed for educational purposes, are aimed at minimizing design and jobsite errors by providing an immersive and educational experience in construction detailing. Beyond Code Construction Education Inc. does not assume liability for the use of our services or content and is not responsible for any decisions made based on the information we provide.

It is the responsibility of end users to collaborate with and seek approval from their design team and qualified professionals, who must sign off to ensure that all aspects of Beyond Code Construction Education Inc. details, obtained through our services or content, are in alignment with their specific project requirements. This includes, but is not limited to, verifying dimensions, materials, installation methods, and ensuring compliance with local regulations. Please note that the details provided by Beyond Code Construction Education Inc., as part of our services and content, may not be proportionally or dimensionally precise.

The design, plans, information, and content (the "Content") as provided for on this site by Beyond Code, and on behalf Alberta Ecotrust Foundation (herein "Alberta Ecotrust") are for demonstration and informational purposes only. The Content should be reviewed and vetted by the user's own professionals and advisors in order to ensure the applicability and suitability of any of the Content to the user's own project or plans before making use of same, and the user acknowledges they do so at their own risk at all times. The user also acknowledges and agrees that Alberta Ecotrust is not responsible for the accuracy, applicability, and/or viability of the Content as presented anywhere herein, and that Alberta Ecotrust shall not be liable for the user's use of any of the Content as presented herein, as the Content is for informational purposes only, and has not been prepared specifically for the user.

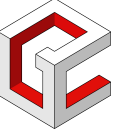
Detail Interpretation

For an overview of what's included with Beyond Code details, please see page 1 and review the Beyond Code Detail Services Brochure.

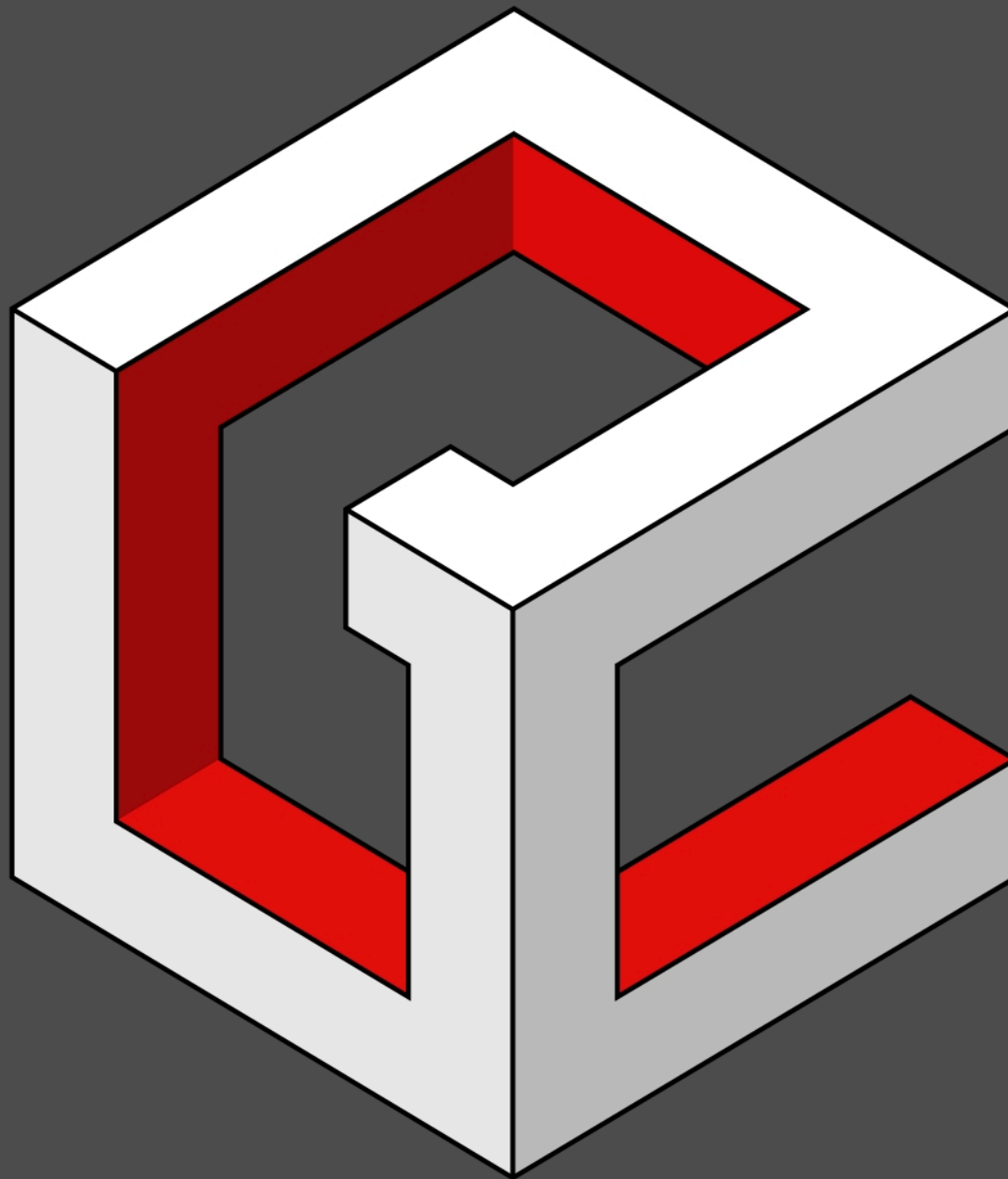
Detail Checklist

Use our complimentary checklist below to prevent errors during your project.

- Reviewed and understood all material provided by Beyond Code**
- Building code**
- Building bylaws**
- All local regulations**
- Architectural standards**
- Structural standards**
- MEP standards**
- All other trade standards**
- Details are feasible** - confirm sizing, sequencing, etc of materials and proportions of details
- Manufacturer standards** - including but not limited to gluing, fastening, compatibility, etc.
- Projects design team has created a schedule of details for the projects design documents**



Foundation Details (F)

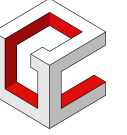


BEYOND CODE

Construction Detail Design
© Beyond-Code.net

Basement Foundation Detail - F2-16

Construction Detail Design
© Beyond-Code.net



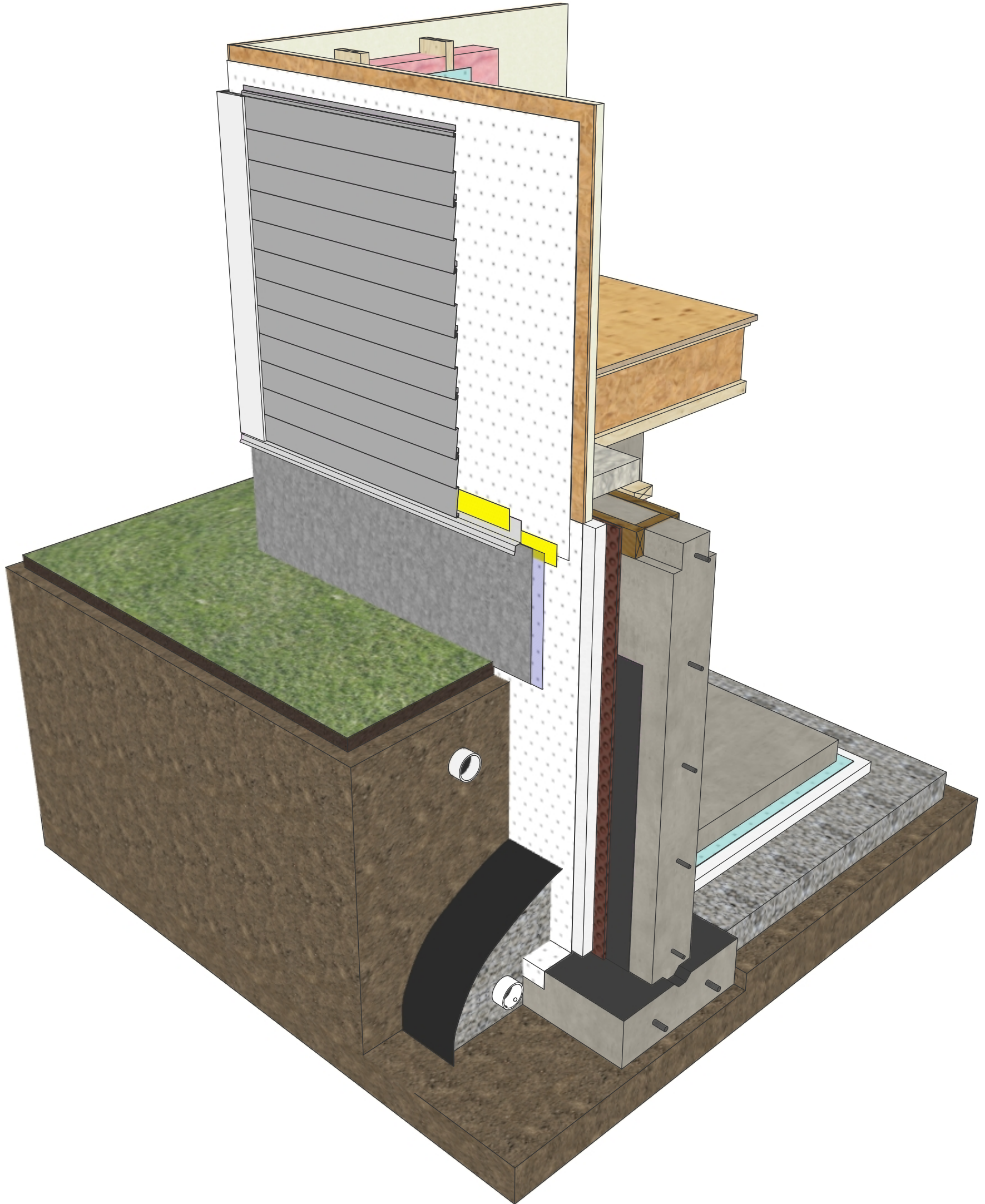
Full Drawings Set

Select Any Option Below

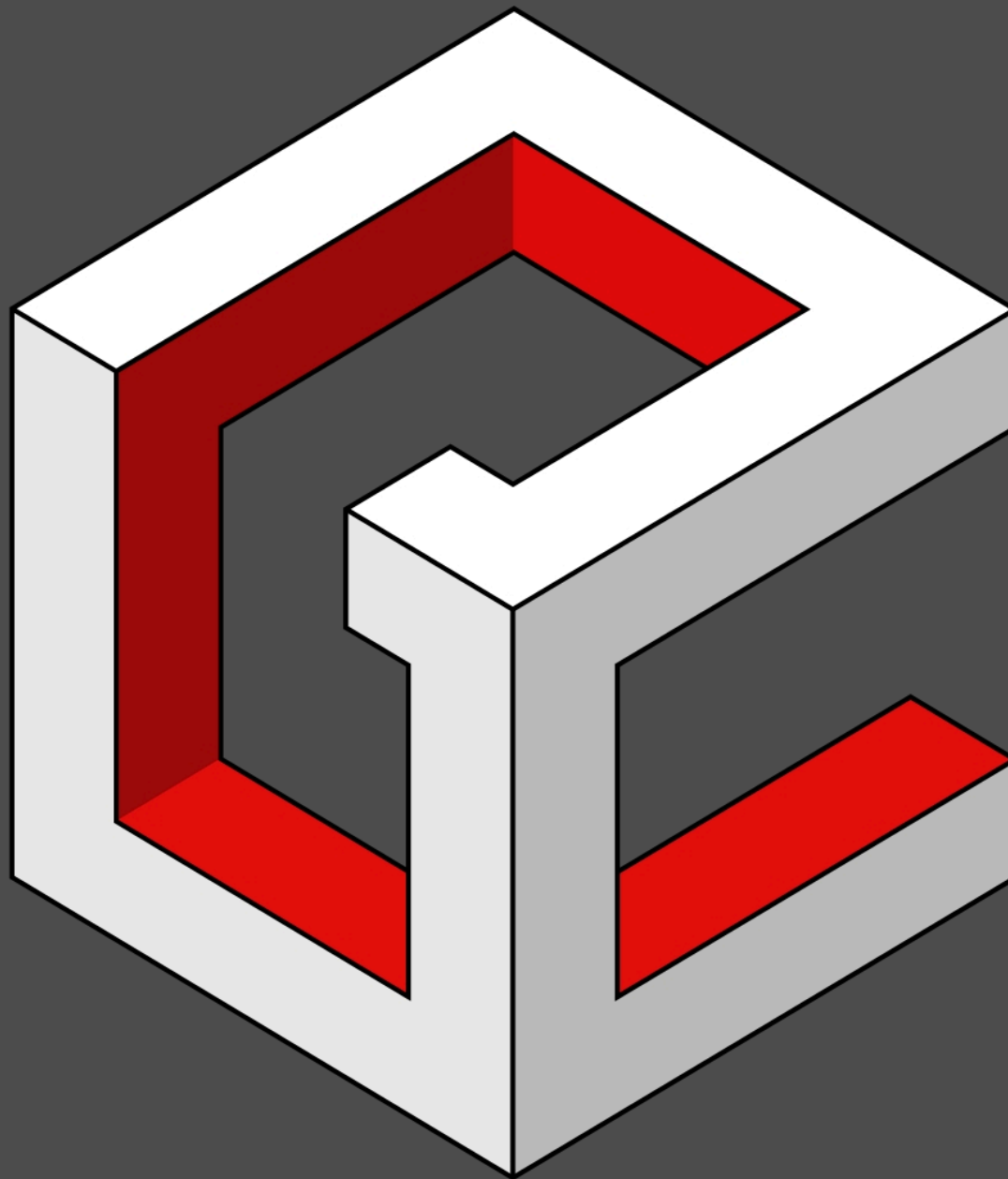
3D Animation

3D Model

3D Drawings



Wall Details (WL)

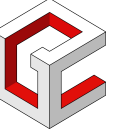


BEYOND CODE

Construction Detail Design
© Beyond-Code.net

Exterior Wall Electrical Penetration Detail - WL2-21

Construction Detail Design
© Beyond-Code.net



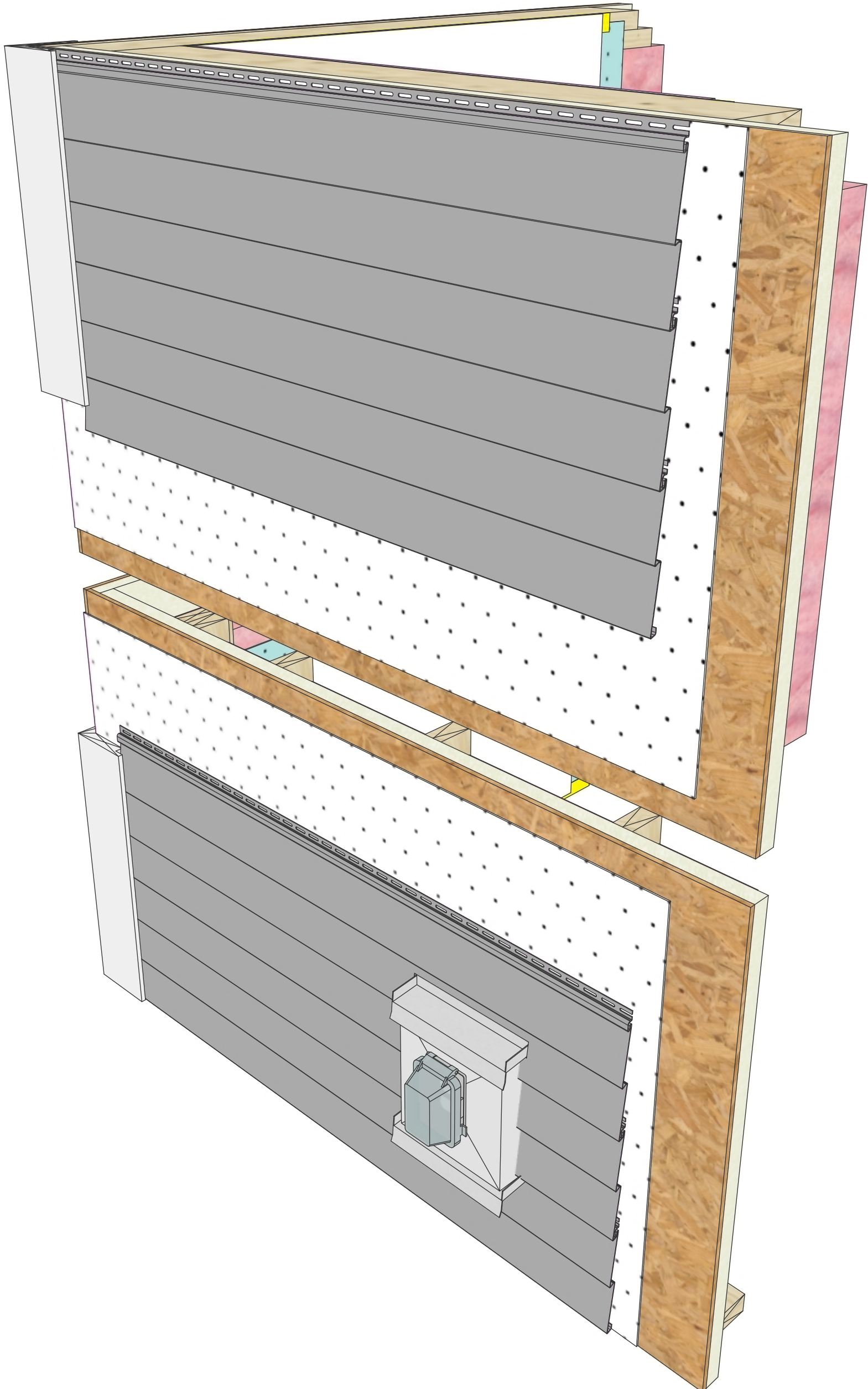
Full Drawings Set

Select Any Option Below

3D Animation

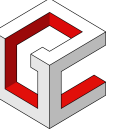
3D Model

3D Drawings



Exterior Wall Duct Penetration Detail - WL2-22

Construction Detail Design
© Beyond-Code.net



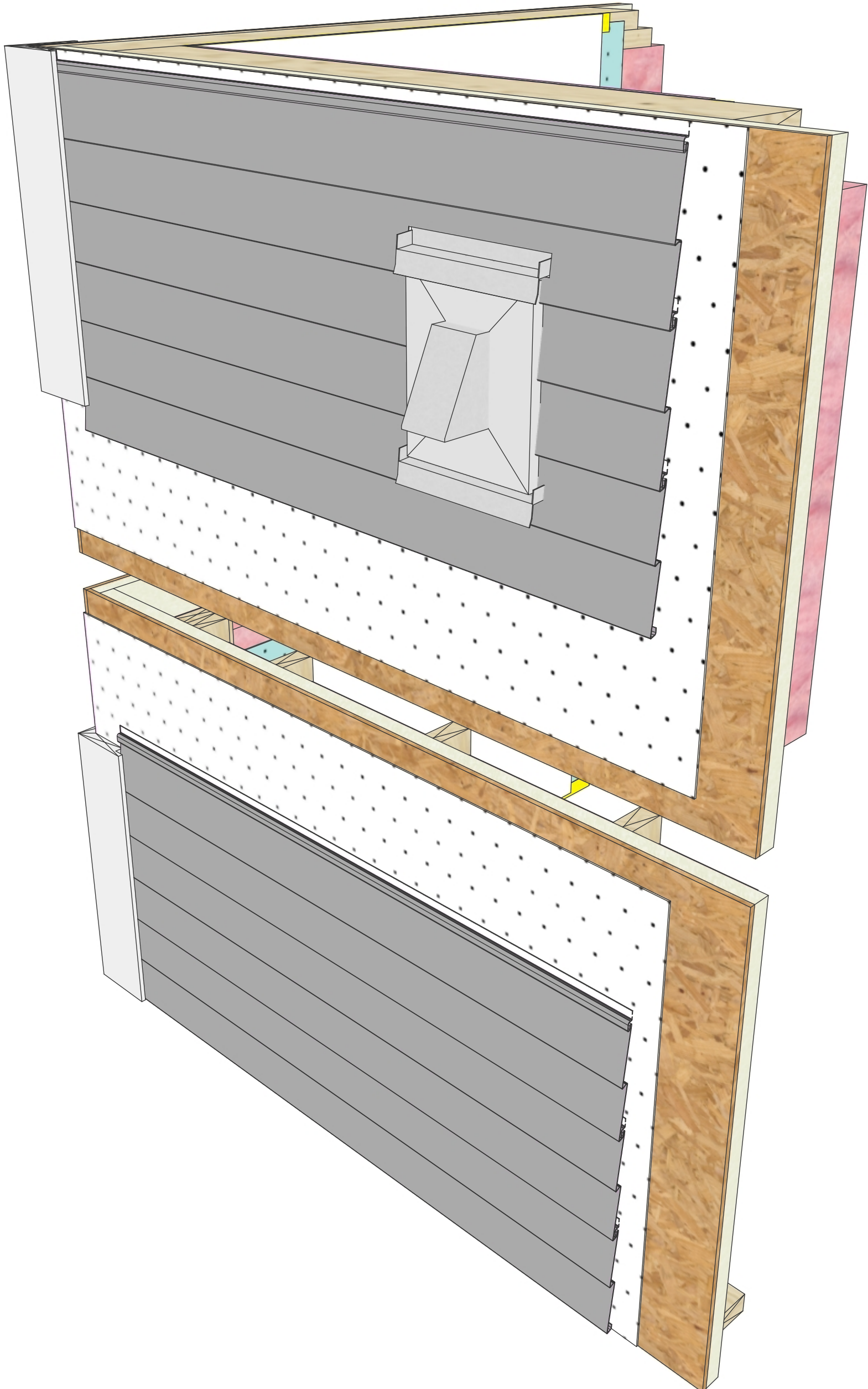
Full Drawings Set

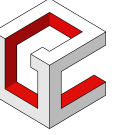
Select Any Option Below

3D Animation

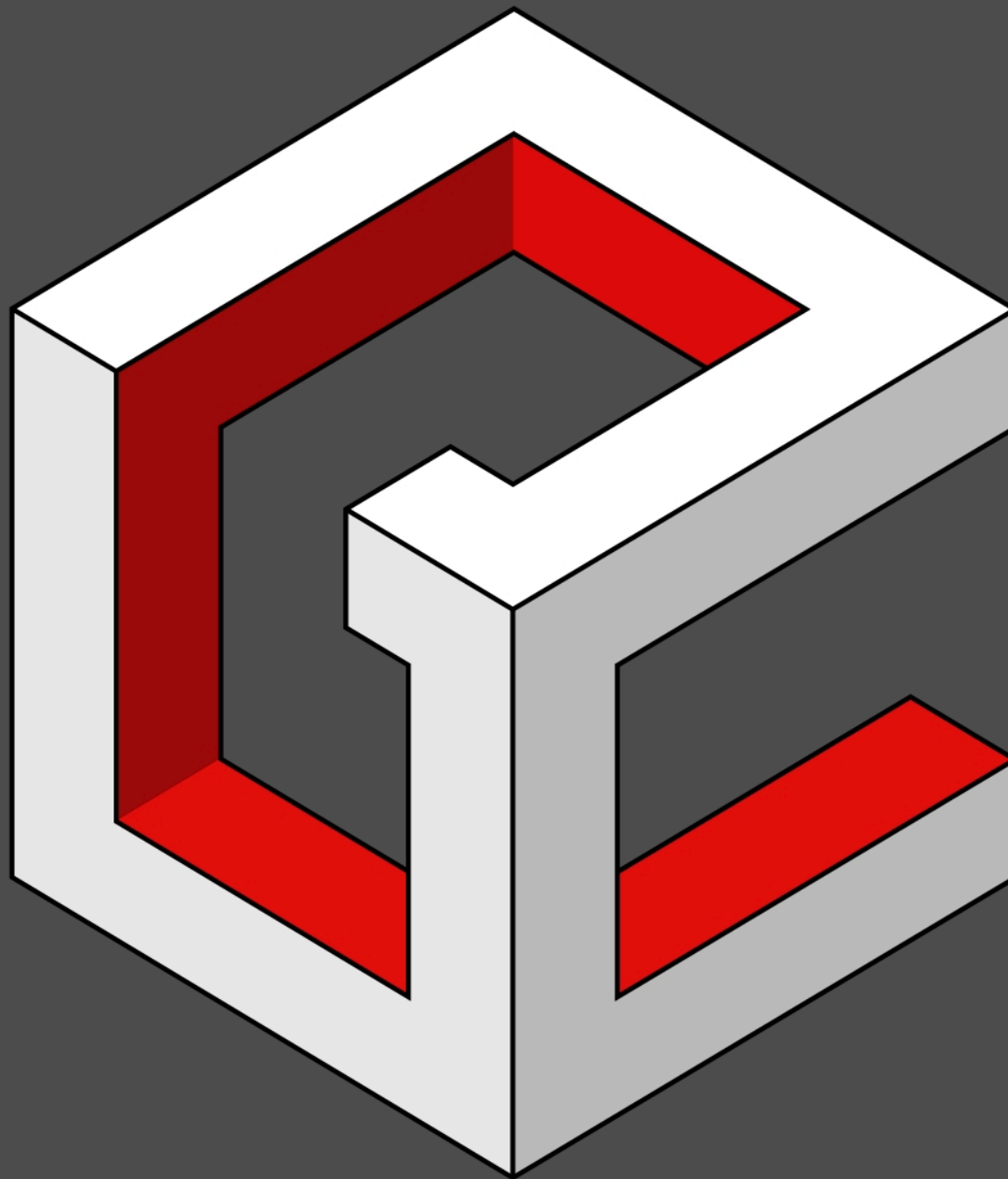
3D Model

3D Drawings



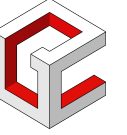


Window Details (W)



BEYOND CODE

Construction Detail Design
© Beyond-Code.net



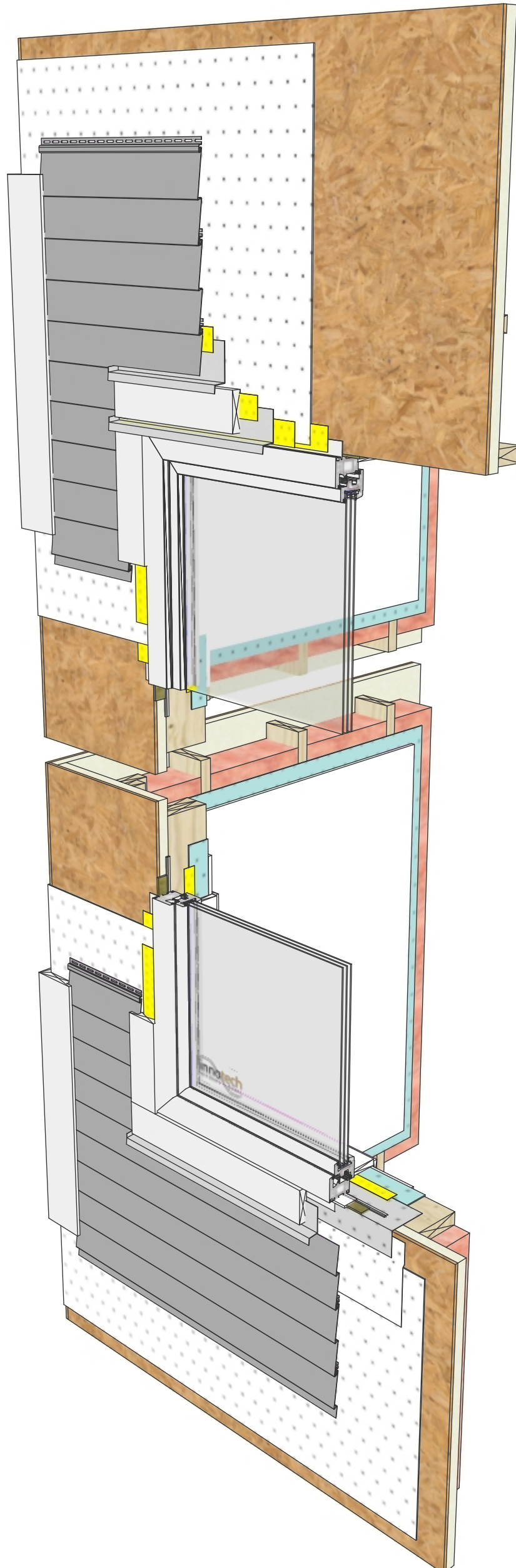
Full Drawings Set

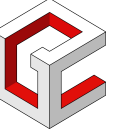
Select Any Option Below

3D Animation

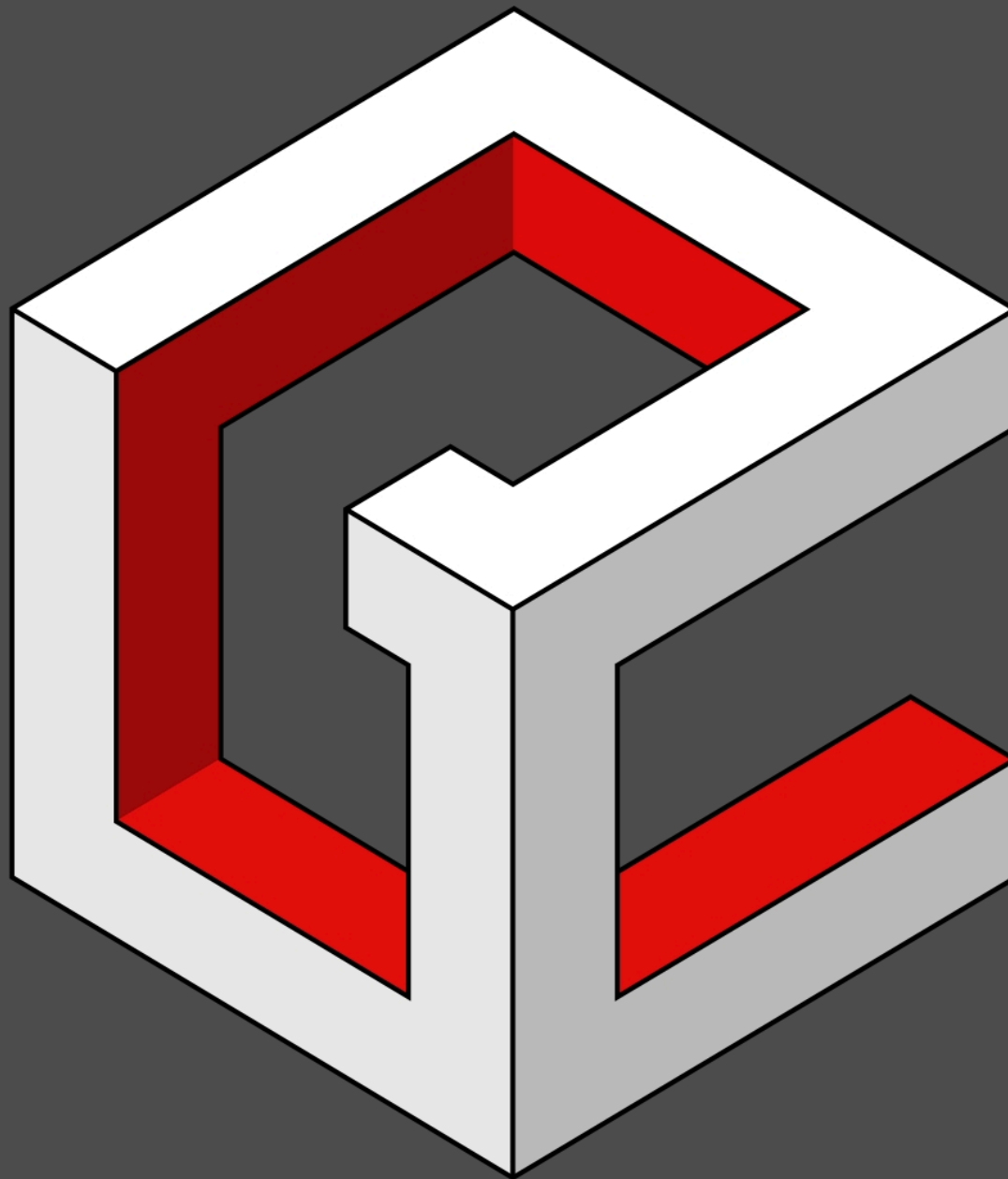
3D Model

3D Drawings





Roof Details (R)

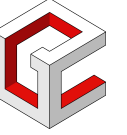


BEYOND CODE

Construction Detail Design
© Beyond-Code.net

Vented Roof Detail - R1-10

Construction Detail Design
© Beyond-Code.net



Full Drawings Set

Select Any Option Below

3D Animation

3D Model

3D Drawings

